

# Plant genomic DNA Extraction in Full Bloom

## Highlights

- High purity DNA extraction from a wide variety of plant species and tissue type
- EzPure™ Filter allows efficient removal of secondary metabolites
- Simple 40 minute scalable DNA (mini, Midi, Maxi) extraction
- Ready for any downstream application

## Accommodates Various Samples



Root



Leaf, Stem



Seed



Fruit  
(fruit flesh, fruit skin)



Seaweed

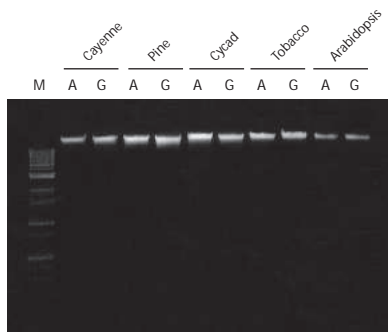


Tree bark



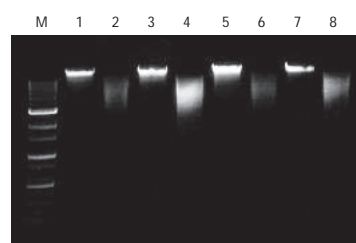
Commercial tea

## Comparison of DNA Extraction with supplier Q



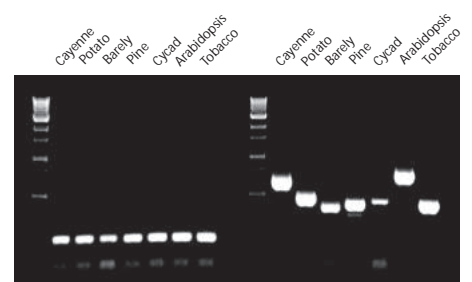
Genomic DNA was extracted from each 100 mg of various samples and analyzed on 0.8% agarose gel. To compare with supplier A, same kind and amount of each plant samples were subjected to extraction. Lane A : supplier A, Lane G : Exgene™ Plant, Lane M : 1 kb ladder

## Compatibility Test with Restriction Enzymes



Genomic DNA purified from various plant samples by Exgene™ Plant SV kit was subjected to partial digestion with HindIII (Lane 2, 4, 6, 8). Lane 1, 3, 5, 7 represent undigested DNA. Lane M : 1 kb ladder

## PCR Amplification



PCR reaction was performed with purified DNA using Exgene™ Plant SV kit. Two primer sets were used : trnL region (left lanes) and large subunit rRNA gene (right lanes).